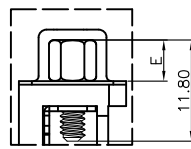
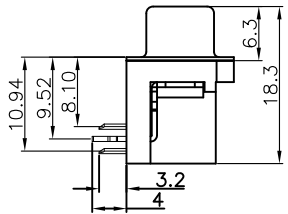
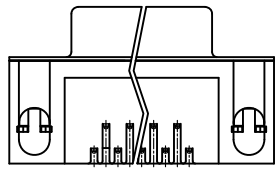
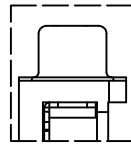
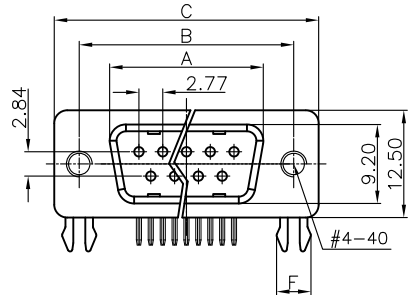


RECOMMEND PCB LAYOUT(TOLERANCE=±0.05)  
(VIEW FROM TOP SIDE)

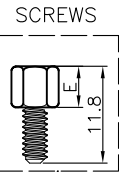


WITH SCREW TYPE

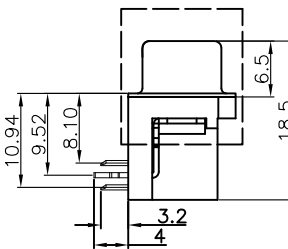
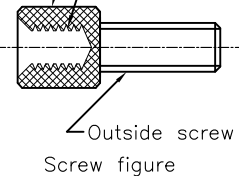
[MALE]



WITH RIVET TYPE



Inside screw thread



WITH SCREW AND RIVET TYPE

Dimensions:

Positions	A±0.2	B±0.2	C±0.2	D
9	17.90	24.99	30.80	16.33
15	26.50	33.32	39.14	24.66
25	40.00	47.04	53.04	38.38
37	56.50	63.50	69.32	54.84

REV.	DESCRIPTION	DRAWN	CHECKED	APPROVED
A	NEW RELEASE	LJH 05/13/06'		LJC 05/13/06'
E	ADD SCREW TYPE	YCH 05/28/09'		LJC 05/28/09'
F	ADD SCREW TYPE	LJC 12/13/13'		

NOTES:

1. SPECIFICATIONS:

- 1.0 VOLTAGE RATING: 250V AC.
- 1.1 CONTACT CURRENT RATING: 1.5A MAX. PER PIN.
- 1.2 CONTACT RESISTANCE: 20mΩ MAX.
- 1.3 DIELECTRIC WITHSTANDING VOLTAGE: 500V AC(rms) FOR 1 MINUTE.
- 1.4 INSULATION RESISTANCE: 1000MΩ MINI.
- 1.5 TEMPERATURE RANGE: -40°C~+105°C.

2. PRODUCT NUMBER CODE:

DS1037-XXXXXXXX-XXX

- SCREW MATERIALS (F)
  - F: STEEL C: COPPER ALLOY
- BOARD LOCK MATERIALS (F)
  - F: STEEL C: COPPER ALLOY
- INSULATOR MATERIALS (F)
  - 0: PBT UL94 V-0 2: PBT UL94 HB
- SCREW DIM. E
  - 4: 4.80mm 5: 5.80mm
  - 6: 4.80mm(Inside thread M2.6\*0.45p, outside thread unc#4-40)
  - M3: 4.80mm(Inside thread M3.0, outside thread unc#4-40)
- BOARD LOCK DIM. F
  - 4: 4.00mm 7: 3.70mm
- CONTACT PLATING
  - T: SELECTIVE GOLD FLASH
  - Si: FULL GOLD FLASH
  - 6: FULL TIN 1: SELECTIVE 10u" GOLD
- COLOR OF HOUSING
  - K: BLACK B: BLUE C: BLUE(PC99)
- SCREW TYPE
  - A: WITH SCREW TYPE B: WITH RIVET TYPE
  - C: WITH SCREW AND RIVET TYPE
  - D: RIVET TYPE WITH SCREWS IN BULK PACKAGE
  - E: WITH RIVET TYPE(N/A THREAD)
- SHELL PLATING
  - N: Nickel T: Tin
- CONNECTOR TYPE
  - M: MALE F: FEMALE
- No. OF CONTACT
  - 09,15,25,37