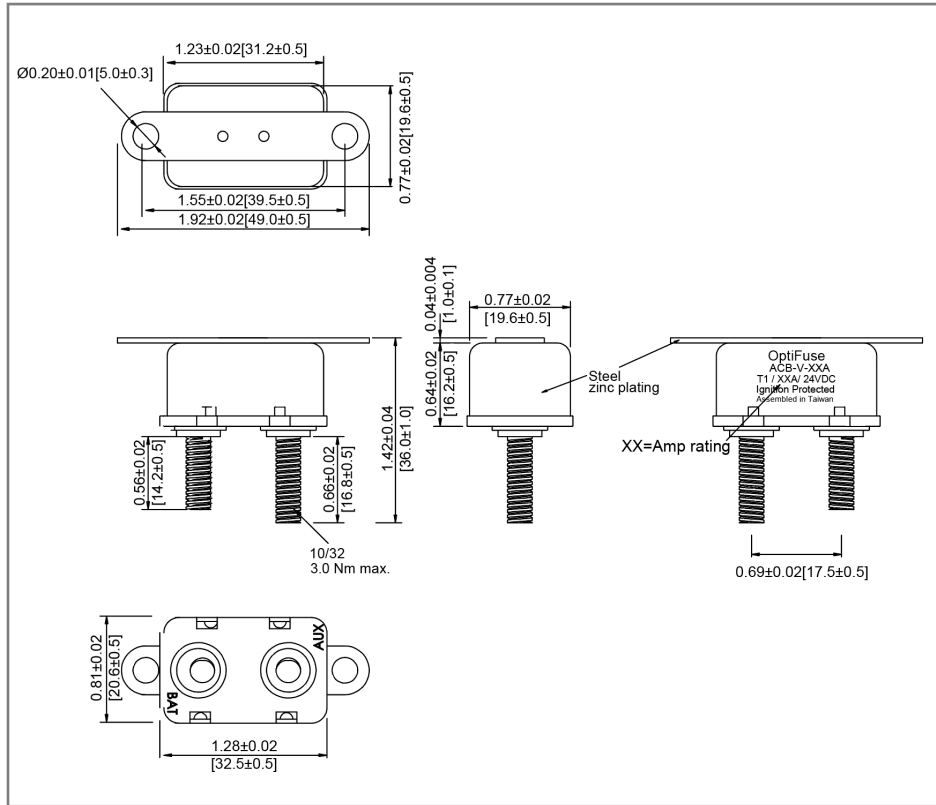


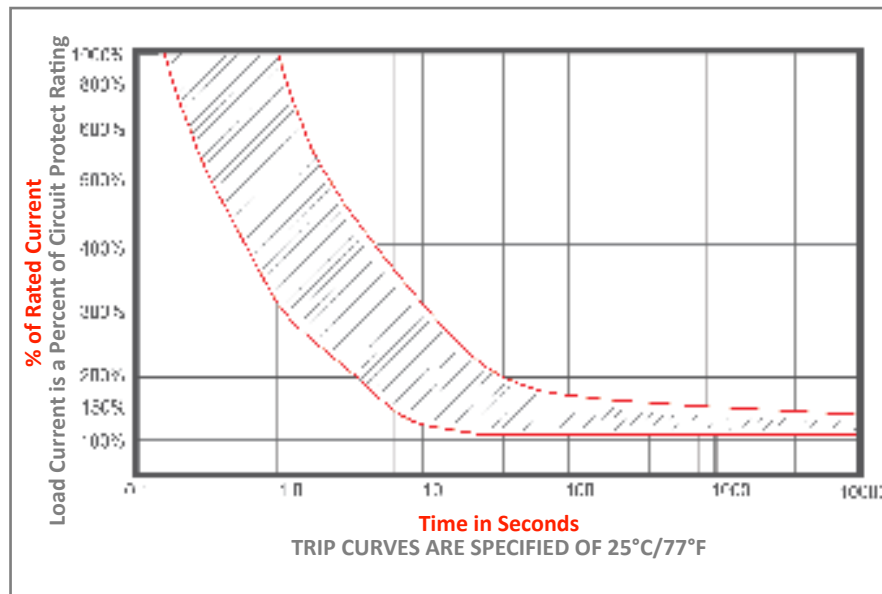
Mechanical Dimensions: Inches [mm]



Part Numbers Information

| Amperage | Optifuse P/N |
|----------|--------------|
| 5A | ACB-V-5A |
| 6A | ACB-V-6A |
| 8A | ACB-V-8A |
| 10A | ACB-V-10A |
| 15A | ACB-V-15A |
| 20A | ACB-V-20A |
| 25A | ACB-V-25A |
| 30A | ACB-V-30A |
| 35A | ACB-V-35A |
| 40A | ACB-V-40A |
| 45A | ACB-V-45A |
| 50A | ACB-V-50A |

Time vs. Percent of Rated Current



| % of Rated Current | Min Trip Time | Max Trip Time |
|--------------------|---------------|---------------|
| 100% | Hold | No Trip |
| 150% | | Trip in 1 hr |
| 200% | 4.0s | 40.0s |
| 300% | 1.2s | 12.0s |
| 400% | 0.6s | 5.0s |
| 500% | 0.4s | 2.8s |
| 600% | 0.3s | 1.8s |

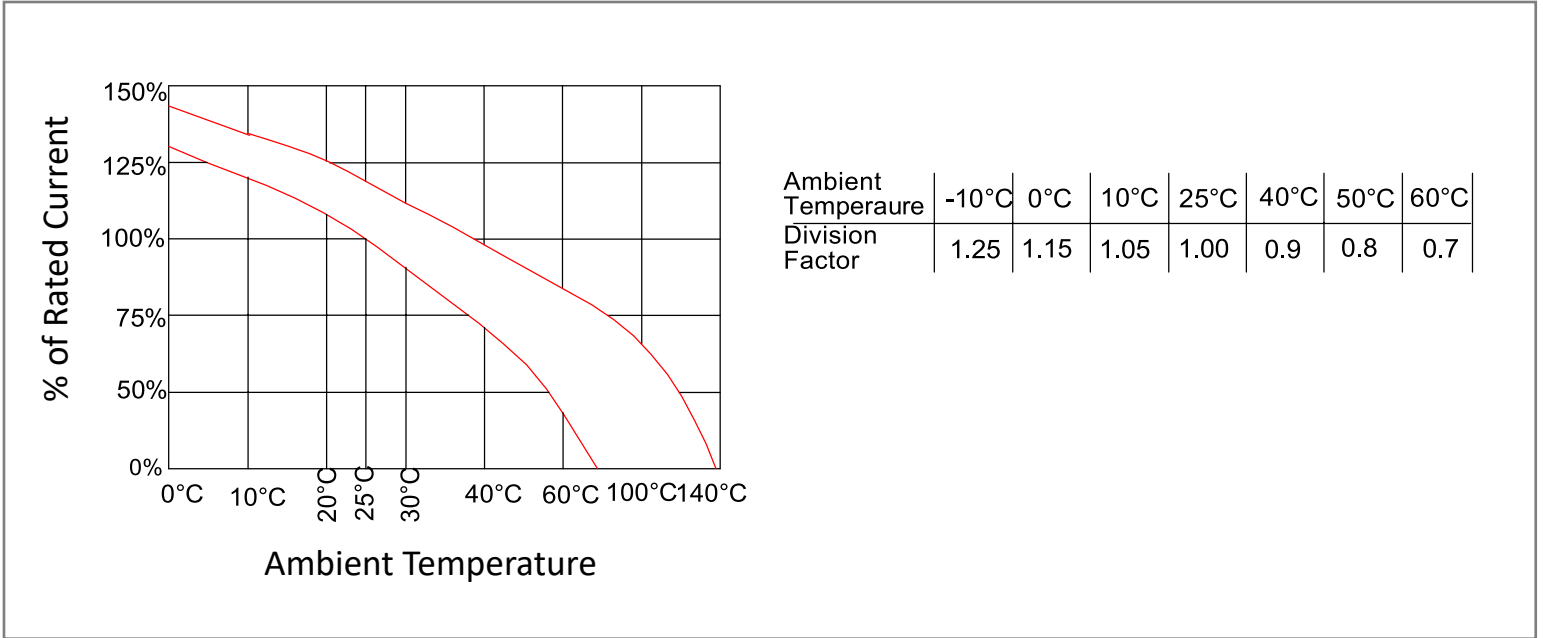
Electrical Specifications

| | |
|-----------------------|-----------------------|
| Voltage Rating | 12/24/32VDC |
| Reset Type | Type I - Auto Reset |
| Interrupting Rating | 4 Times Rated Current |
| Operation Temperature | -10°C ~ 60°C |
| Testing | SAE J553 |

Material Specifications

| | |
|-------------------------|--|
| Body Material | Steel, Zinc plating |
| Terminals Material | Battery – Copper Plated, Auxiliary – Zinc Plated |
| Terminals Configuration | #10-32 stud |
| Studs Torque | 3.0 ± 0.3 N.m |
| Mounting Torque | 1.0 ± 0.1 N.m |
| Ignition Protection | SAE J1171 |

Temperature Derating Curve



| Rev | Date of issue | Revision Notes | Designed | Approved |
|-----|---------------|----------------------------------|----------|----------|
| G | 10-17-2024 | Updated Parts Number Information | RC | OF |