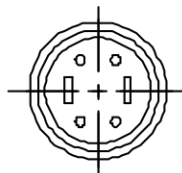
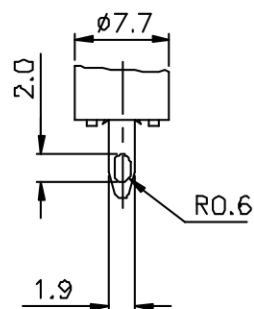
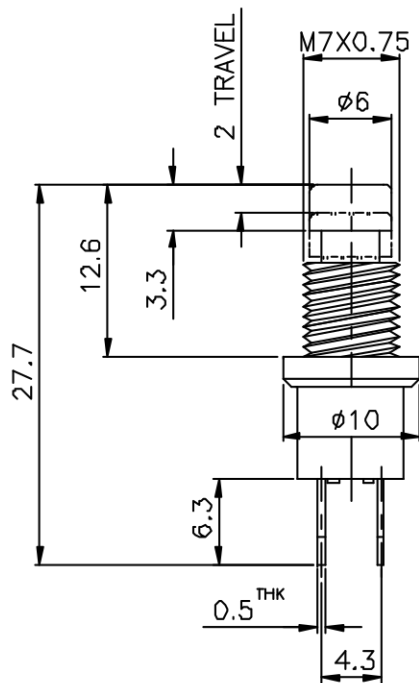


SCHEMATIC



ISSUED	SPECIFICATION (INITIAL)	TITLE: PUSH BUTTON SWITCH(^{PUSH} _{ON})				
	RATING: DC 50V 0.5A	MODEL NO: PB-11D02-T(H1)				
	CONTACT RESISTANCE Not more than 30mΩ	UNIT: m m	DWN	YANG	28/02/06	
	INSULATION RESISTANCE: 500MΩ at 500V DC					
	WITHSTAND VOLTAGE: AC 500V for 1 min	SCALE: 2 . 1	CHK'D			
	OPERATION FORCE: 200±150g	TOLERANCE: ±0.20	APPD			
	SWITCHING LIFE 10000 Cycles(6-10c/m loading)					
BY:	PROMOTIVE INDUSTRIAL CO., LTD. HONG KONG				DRWG NO:	
DATE:					920215-01	

The material contained in this drawing is the property of PIC. Any use other than that specifically authorized by PIC is prohibited. The above drawing is subjected to change for improvement without prior notice.