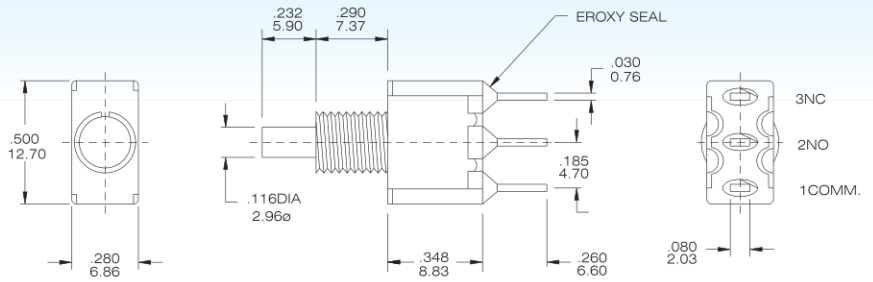
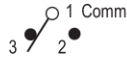




SPDT



Model No.	Switching position	
P8701	on	Mom
Term. Comm.	1-3	1-2

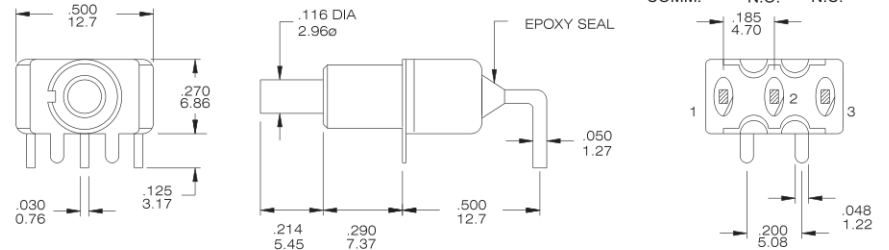
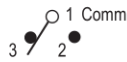


P8701-FBR-E

SPDT

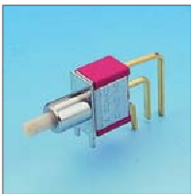


Model No.	Switching position	
P8701-A4	on	Mom
Term. Comm.	1-3	1-2

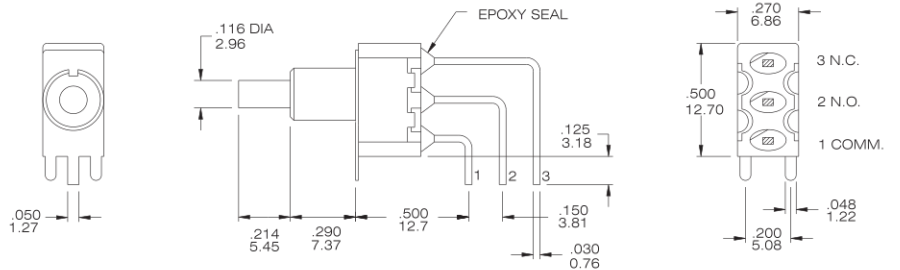


P8701-A4-NR-E

SPDT



Model No.	Switching position	
P8701-A5	on	Mom
Term. Comm.	1-3	1-2

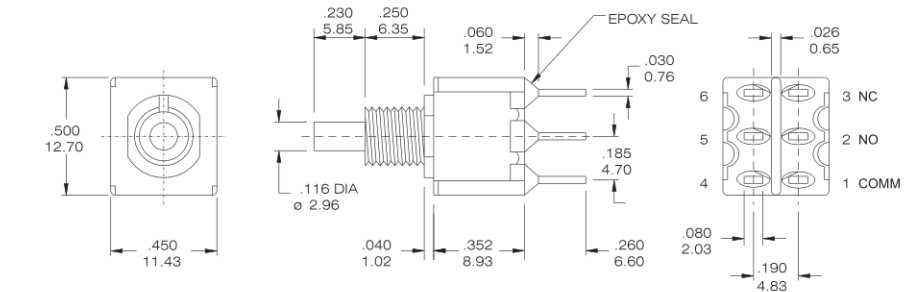


P8701-A5-NR-E

DPDT



Model No.	Switching position	
P8702	on	Mom
Term. Comm.	1-3 4-6	1-2 4-5

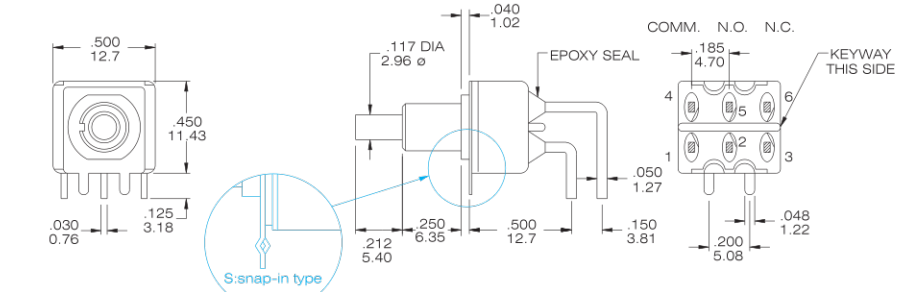


P8702-F4BR-E

DPDT

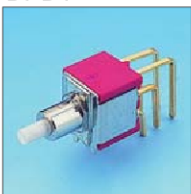


Model No.	Switching position	
P8702-A4	on	Mom
Term. Comm.	1-3 4-6	1-2 4-5

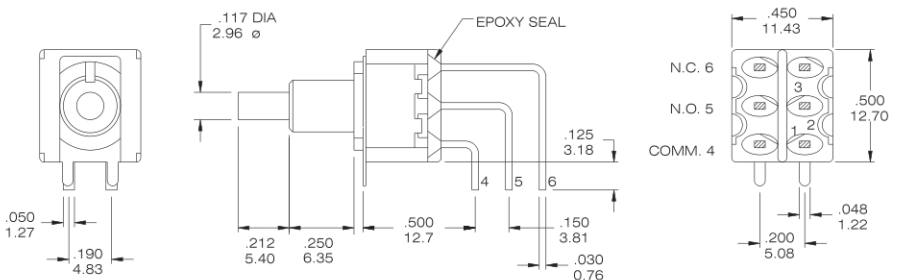


P8702-A4-N4R-E/ P8702-A4-N4R-E-S

DPDT



Model No.	Switching position	
P8702-A5	on	Mom
Term. Comm.	1-3 4-6	1-2 4-5



P8702-A5-N4R-E

INDEX

TOGGLE

ROCKER

SLIDE

PUSH BUTTON

DIP

TACT



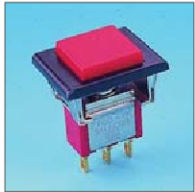
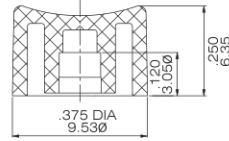
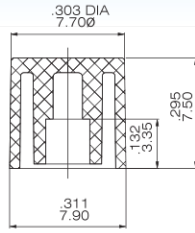
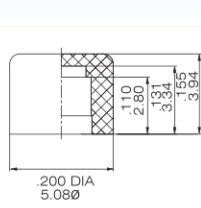
Cap and Actuator Option

Cap color Option

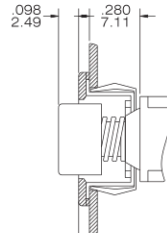
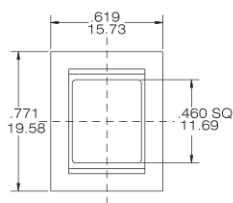
CV

CV1

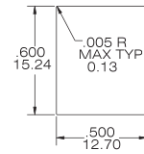
CV2



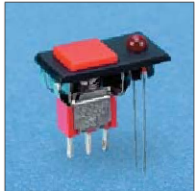
F22A



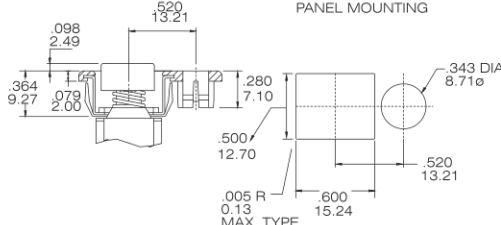
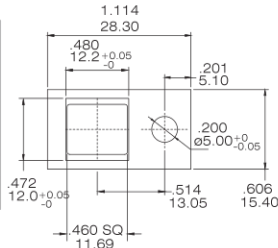
PANEL MOUNTING



P870 * -F22A- * -BR-E



F32A



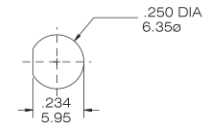
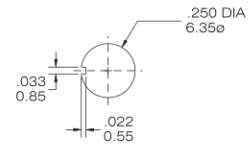
PANEL MOUNTING

P870 * -F32A- * -BQ-E

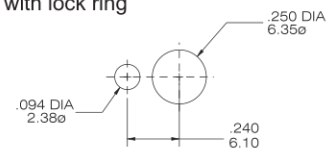
CAP & ACTUATOR OPTIONS	
1	White
2	Black(Std.)
3	Red
4	Orange
5	Yellow
6	Green
7	Blue
9	Gray

Panel Mounting

without lock ring

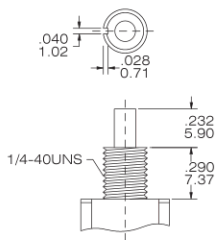


with lock ring

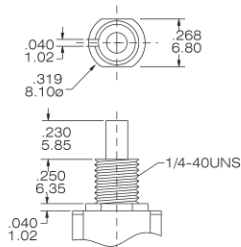


Bushing Option

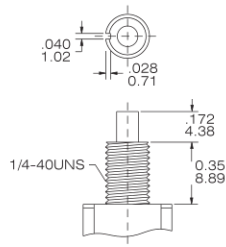
F thd.
N non-thd.
(only for SPDT)



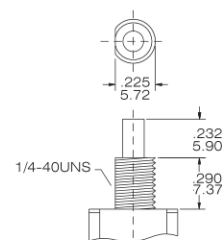
F4 thd.
N4 non-thd.



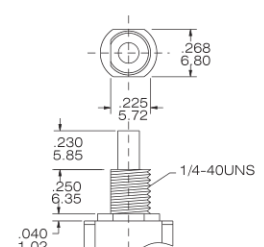
E thd.
(only for SPDT)



F8 thd.
N8 non-thd.
(only for SPDT)



F9 thd.
N9 non-thd.

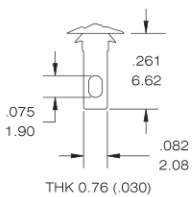


TERMINAL OPTION (ONLY FOR THE STRAGHT TYPE)

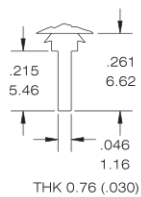
TERMINAL SEAL OPTION

RUBBER HOOD

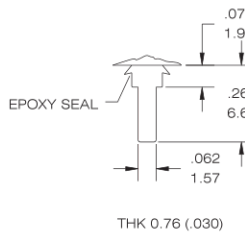
B STD



C PRINTED CIRCUIT



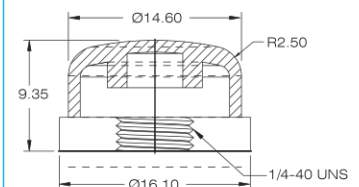
D QUICK CONNECT



E TERMINAL SEAL



E4





CONTACT MATERIAL OPTIONS

CODE	CONTACT MATERIAL	TERMINAL MATERIAL	RATING
Q	Silver plated	Silver plated	1A @ 120V AC or 28 V DC;
R	Gold plated over nickel plated	Gold plated over nickel plated	0.4 VA MAX@ 20V AC or DC MAX
G	Gold plated over silver plated	Gold plated over silver plated	0.4 VA MAX @ 20 V AC or DC MAX or 1 A @ 120V AC or 28 V DC;

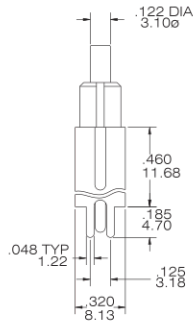
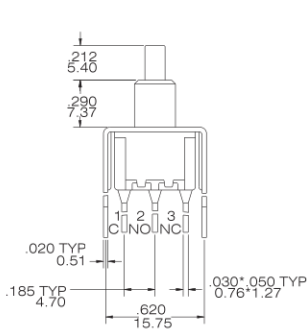
VERTICAL SUPPORT BRACKET OPTION

(only apply the straight type terminal-Please modify the terminal option is "c" code)

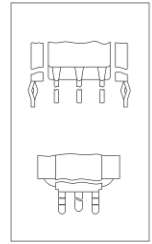
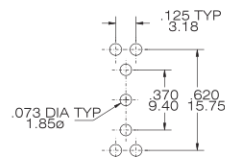
S20/V20



SPDT



P.C. MOUNTING



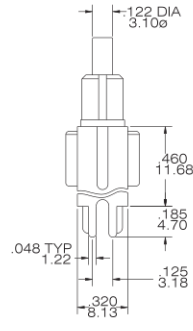
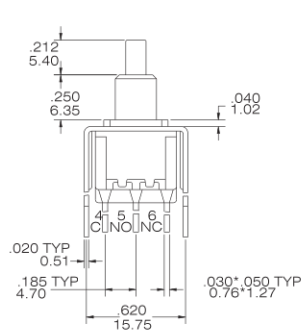
SNAP-IN V 20

P8701-NCR-E-S20

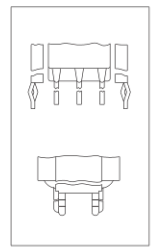
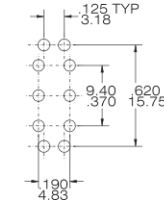
S20/V20



DPDT



P.C. MOUNTING



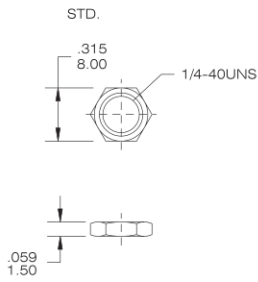
SNAP-IN V 20

P8702-N4CR-E-S20

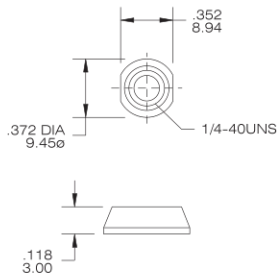
The hard ware of T80-P push button switches

The P.C.B mounting Dimension

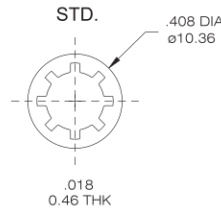
NUT



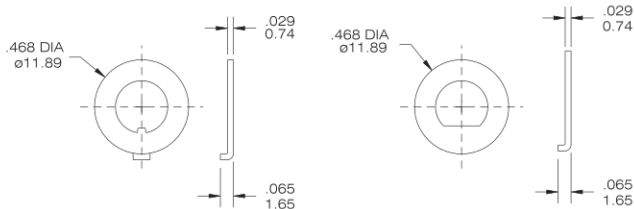
DRESS NUT



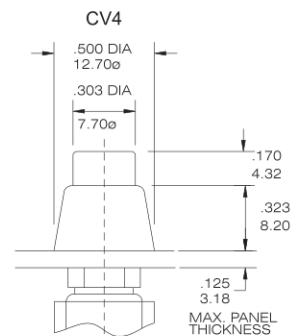
LOCK WASHER



LOCKING RING

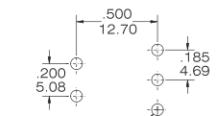


DRESS NUT & CAP

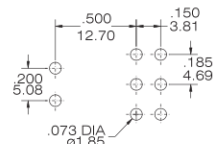


To order dress nut only.

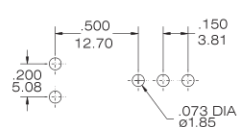
P8701-A4



P8702-A4



P8701-A5



P8702-A5

