

# YIC Ceramic Resonator (ZTB Series)

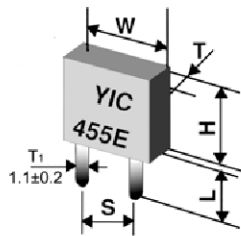
ZTB Series of Ceramic Resonator

190-1250KHz

● TECHNICAL CHARACTERISTICS

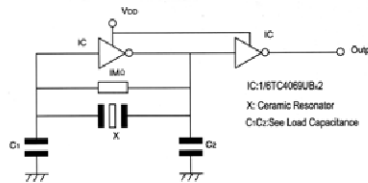
Part Number	Frequency Accuracy	Resonant Impedance(Ω)	Stability in Temperature (-20~+80°C)	Aging For Ten Years	Load Capacitance	
					C1	C2
ZTB190~249D	±1KHz	≤ 20	±0.3%	±0.3%	330	470
ZTB250~374D	±1KHz	≤ 20	±0.3%	±0.3%	220	470
ZTB375~429P	±2KHz	≤ 20	±0.3%	±0.3%	120	470
ZTB430~509E	±2KHz	≤ 20	±0.3%	±0.3%	100	100
ZTB510~699P	±2KHz	≤ 30	±0.3%	±0.3%	100	100
ZTB700~1250J	±0.5%	≤ 100	±0.3%	±0.3%	100	100

\* 90 degree of bended lead type is available, for example ZTB455EB, .....



Frequency range	Width W(mm)	Thickness T(mm)	Height H(mm)	Lead Space S(mm)	Lead Length L(mm)
190~249KHz	13.5	3.6	14.7	10.0	8.0
250~374KHz	11.0	3.6	12.2	7.7	7.0
375~429KHz	7.9	3.6	9.3	5.0	6.0
430~699KHz	7.0	3.5	9.0	5.0	4.0(6.0)
700~1250KHz	5.1	2.2	6.3	2.5	4.0

● TEST CIRCUIT



● CHARACTERISTICS

